



# ANNUAL REPORT 2023-2024



**GeoScienceWorld**

Celebrating 20 Years of Collaboration and Discovery



Dear GeoScienceWorld Community,

As we mark our 20th anniversary, we celebrate two decades of remarkable growth and impact. Guided by our core values of listening, collaboration, and innovation, GeoScienceWorld (GSW), fulfills its mission to aggregate and disseminate information that advances earth science and strengthens the sustainability of our society partners. Since our founding, we have returned over \$64 million in royalties to our society partners to help advance their publishing, research, and educational programs.

We are pleased to share our achievements in the 2023-2024 Annual Report. Key highlights include:

- ◊ Welcoming two new publishers: Geological Society of India (GSI) and the Geological Association of Canada (GAC)
- ◊ Adding the *Journal of the Geological Society of India* and welcoming back *Clays and Clay Minerals* to our collection
- ◊ Launching the GSW Diversity and Representation Award
- ◊ Electing our first Early Career Researcher to the Board of Directors
- ◊ Enhancing platform accessibility and the user experience
- ◊ Investing in and supporting our society partners needs by expanding our editorial and production services

Our 20th Anniversary isn't just a reflection on past accomplishments; it's a celebration of our shared commitment to the future. Our focus on innovation and collaboration will enable us to embrace new opportunities to fulfill our mission and to advance geoscience research and knowledge on a global scale. We extend our heartfelt thanks to our member societies, publishing partners, subscribers, and the entire geoscience research community. Your continued support and collaborative focus are the foundation of our success.

Sincerely,



**Colin P. North**

GSW Board Chair  
Senior Lecturer in Geology  
University of Aberdeen



**Phoebe McMellon**

Chief Executive Officer  
GeoScienceWorld





# WHAT WE STAND FOR

---

## VISION

---

To be the essential resource for and partner to the earth and planetary science community, advancing knowledge, discovery, and insights for all.

## MISSION

---

As a unique nonprofit collaborative, our mission is to aggregate and disseminate information to advance earth science and to strengthen the sustainability of our society partners.

## VALUES

---

We are driven by our commitment to our customers. We deliver exceptional products, services and experiences by focusing on our core values.

### LISTEN

We listen with an open mind so new ideas can come forward and flourish.

### RESPOND

We respond with curiosity, purpose, and transparency in dialog with our community.


### COLLABORATE

We collaborate with integrity, leading by example to build trusted partnerships.

### INNOVATE

We innovate with an agile mindset, turning ideas into action.





Over the past year, our executive team has spearheaded the creation of a new, comprehensive 3-year Strategic Plan (2024-2027), outlining key objectives, initiatives, and a roadmap to fulfill our mission and long-term vision. Approved by GSW's board, this plan aligns resources, establishes measurable KPIs, and incorporates stakeholder input to guide our organization's growth, innovation, and impact through 2027.

## STRATEGIC PRIORITIES:

### ◇ SUSTAINABLE GROWTH

Deliver valued products and services that address researcher, librarian, and society publisher needs, that captures market opportunities and mitigates risk.

### ◇ ENGAGEMENT AND COLLABORATION

Foster, collaborate, and leverage partnerships to accelerate growth and innovation, achieve economies of scale, and add impact and value to existing relationships.

### ◇ PEOPLE AND CULTURE

Embrace our Core Values and a strategic and customer-centric mindset. Be a supportive, collaborative, and a solutions-oriented organization where we learn, grow and excel.



# CELEBRATING 20 YEARS OF COLLABORATION AND DISCOVERY

As GeoScienceWorld celebrates its 20th anniversary, we reflect on our journey from an innovative collaboration to a catalyst for positive change in geoscience publishing. Founded in 2004 by seven leading societies, GSW emerged with a clear mission: to support independent geoscience societies through shared publishing technologies and economies of scale, while making earth science research more accessible and impactful worldwide.

Our unconventional business model, which returns over 93% of earnings to partner societies, has been a cornerstone of our success. What began as a collection of online society journals on a single platform, has flourished into a comprehensive resource for researchers working in academia, corporate, and government, and for our society partners that rely on GSW for critical services such as membership access, renewals, open access publishing, and editorial and production services. Leveraging the value of an aggregated collection of high-quality, trusted, and curated content from over 40 leading geoscience publishers, GSW has successfully achieved market scale and global reach. With more than 1,000 institutional subscribers and 250,000 individual researchers from over 44 countries accessing the platform, GSW supports the research needs of large and small consortia, academic institutions, government agencies, and large and small corporations.

## FOUNDING SOCIETIES



American Association  
of Petroleum  
Geologists (AAPG)



American Geosciences  
Institute (AGI)



The Geological  
Society of London



SEPM Society for  
Sedimentary Geology



Geological Society  
of America



Mineralogical  
Society of America



Society of Exploration  
Geophysicists

# FOCUS ON DIVERSITY, REPRESENTATION, AND ACCESSIBILITY

Over two decades, we've learned that progress in science isn't just about accumulating knowledge—it's about nurturing partnerships and ensuring diverse voices contribute to and benefit from that knowledge. Building upon our foundational principles of collaboration and discovery, much of our work this year focused on expanding our perspectives and impact in support of the geoscience community.

## NEW AWARD

GeoScienceWorld is pleased to have launched the GeoScienceWorld Diversity and Representation Award, a new annual scholarship program for graduate students in the geosciences. The goal of this initiative is to lower barriers to participation for graduate students from historically marginalized communities (racial and ethnic backgrounds, gender identities, sexual orientations, and/or disabilities) in the Earth Sciences, Planetary, or Earth Science-adjacent degree programs.

Barira Rashid is the first recipient of the award and received \$5000 and had her winning essay published in GSW's OA journal, *Lithosphere*. Currently, Barira is actively engaged in research at the Science and Technologies for Phosphorus Sustainability (STEPS) Center, and is a graduate research assistant at the University of Arkansas's Muenich Lab Group. Through her work, she strives to contribute to the advancement of sustainable practices and environmental management.

[Read more here >](#)

"The global community plays a crucial role in achieving diversity and inclusion in Earth Sciences. We must challenge stereotypes, break down barriers, and create a welcoming and supportive environment for all. By encouraging the exchange of ideas, resources, and opportunities across borders, we can create a more diverse and inclusive scientific community that better reflects the diversity of our planet."

**Barira Rashid**

Award Winner





## PLATFORM ENHANCEMENTS

Improving the user experience and accessibility of our content to drive usage, engagement, and discoverability continues to be a top priority to ensure researchers get the most value from our platform's resources. New enhancements include:

- ◆ Refined readability, accessibility, and layout of HTML versions of article pages, increasing engagement time by 6%.
- ◆ Revamped quick search functionality to dramatically improve search results.
- ◆ Implemented an "Early Publication Indicator" on content and search results pages, resulting in a 14% increase in pageviews and an 18% increase in usage of early publication content.
- ◆ Improvements to OpenGeoSci, our map-based search tool, allow users to link directly to the article page. In the first four weeks after launch, this enhancement resulted in a 28% increase in pageviews and a 64% increase in users.
- ◆ Optimized indexing of GSW content in discovery services, leading to better experiences for researchers and librarians.
- ◆ Created a large format table option that allows users to view the table in a larger format in a new tab and copy and paste the table into a spreadsheet. Things to include:
- ◆ Added a new feature in the References tab to link a reference with a DOI in the GSW corpus directly to that article or book chapter on the platform.





## BOARD REPRESENTATION

---

This year, GSW welcomed an early career researcher to our board of directors. This addition reflects our ongoing efforts to include diverse voices and perspectives in our organization. By bringing in a newer member of the geoscience community to our governance team, we hope to gain fresh insights and better represent the diversity of the field. This step is part of our broader commitment to creating opportunities for underrepresented groups and emerging talent within the geosciences.

[Read more about our new board member here >](#)

"My experience in academia and government research has given me a well-rounded perspective on the opportunities and challenges facing the geosciences and the interdisciplinary nature of my research allows me to cross-cut traditional geoscience boundaries and identify valuable collaborations and opportunities. As an early career scientist, I am looking for ways to be involved in, and contribute to professional societies. I look forward to the opportunity to further advance the goals and initiatives of GeoScienceWorld."

**Ashley Manning-Berg**

*Assistant Professor of Geology, The University of Tennessee at Chattanooga*



# JOURNALS & EBOOK COLLECTIONS

GSW's research platform provides seamless access to trusted content in 12 major subject areas and 78 subdisciplines to academic, industry, and governmental institutions in 44 countries across the globe.

**218K**  
articles

GSW's journals collection provides access to 55 top-tier journals from 38 global publishers including one new journal, *Journal of the Geological Society of India*, and the return of *Clays and Clay Minerals*.

**2,432**  
eBooks

GSW eBook collections (1926 - 2024) provide integrated, high-value, full-text content. This year we added 63 new books and two new eBook publishers, the Geological Society of India (GSI) and the Geological Association of Canada (GAC).

**4.6M**  
GeoRef  
Records

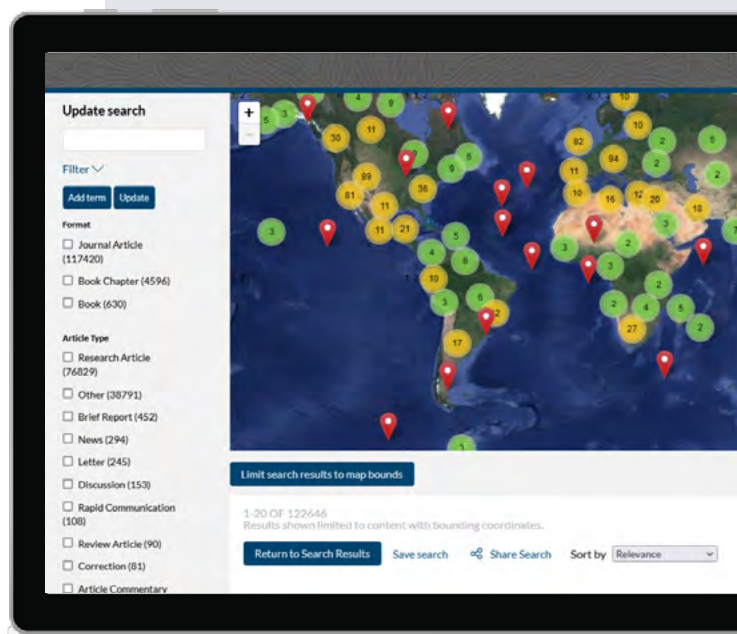
GSW is powered by GeoRef, the most authoritative abstracting and indexing database in the geosciences. The GeoRef integration is essential to providing the most comprehensive research experience possible.

**40,000**  
controlled  
vocabulary  
terms

The GeoRef Thesaurus is indispensable for increasing the accuracy and relevance of search results. This taxonomy helps users find related content with a single search by including terms they may not have otherwise thought to search, but are relevant to the topic.

## OpenGeoSci

Our free map-based toolset, OpenGeoSci, further aids researchers in discovering all of the content of a geographic area – such as cross-sections, charts, tables, figures, and data – relevant to their research. The results now link directly to the article or chapter in the database making for a faster, more effective, and seamless search experience. The OpenGeoSci tool and article abstracts are free and open to all to explore.





# BREADTH OF CONTENT

Areal & Structural Geology

7%

Economic Geology

14%

Environmental &  
Engineering Geology

6%

Geochemistry

3%

Geophysics

22%

Hydrogeology & Hydrology

Mineralogy &  
Crystallography

1%

Misc. & Mathematical  
Geology

8%

2%

Paleontology

5%

Petrology

13%

Stratigraphy & Historical  
Geology

10%

Surficial Geology &  
Soils

7%



# Lithosphere

Lithosphere is published by GeoScienceWorld in collaboration with five international societies.

The journal publishes authoritative research and reviews across a broad scope of geoscience disciplines, providing a home for both specialized and interdisciplinary research, advancing understanding.

## TOPICS COVERED

- ♦ Applied Geophysics
- ♦ Atmospheric Science
- ♦ Economic Geology
- ♦ Engineering Geology and Natural Hazards
- ♦ Geochemistry and Petrology
- ♦ Geomorphology, Regional Geology, Past Environments
- ♦ Mineralogy and Crystallography
- ♦ Oceanography
- ♦ Petroleum Geology
- ♦ Sedimentary Geology, Paleoclimate, Paleontology
- ♦ Space and Planetary Science
- ♦ Structural Geology and Tectonics

**4.1**  
Scopus

**1.964**  
SJIR

**1.8**  
IF

**27**  
H-Index

**2.0**  
5-year IF

## PARTICIPATING PUBLISHERS

- ♦ American Association of Petroleum Geologists (AAPG)
- ♦ Geological Society of America (GSA)
- ♦ Mineralogical Society of America (MSA)
- ♦ SEPM Society for Sedimentary Geology
- ♦ Society of Exploration Geophysicists (SEG)

“Only by better understanding the historical process of the earth’s evolution can we predict its future changes more accurately.”

**Zhifei Liu**  
Section Editor, *Lithosphere*





# SOCIETY SERVICES

## THE GSW ADVANTAGE

Through our cooperative and inclusive approach to content sharing, GSW brings a range of opportunities and expertise to geoscientific societies of all sizes, allowing them to thrive and to focus on pursuing their scientific missions.

GSW's infrastructure and strong operational focus help participating societies take advantage of technology and services at reduced costs and with increased efficiency. Hosting and disseminating content on GSW's platform drives usage and discovery by the global research community.

## 7 PARTICIPATING SOCIETIES



## WHAT WE OFFER

- ◇ Content hosting
- ◇ Collaborative platform development
- ◇ Sales and marketing
- ◇ Fulfillment
- ◇ Renewals
- ◇ Customer service
- ◇ Editorial and production services
- ◇ Project management

**100%**  
Retention rate

**1.3K+**  
eBooks supported  
and hosted via Society  
member sites

**15**  
Journals supported  
and hosted via  
Society member sites



# BY THE NUMBERS

---

**\$9.3M**

---

total revenue

**93%**

---

renewal rate

**\$64.2M**

---

in royalties since inception

**\$2.61**

---

average cost per use

**2.6M**

---

users

**80%**

---

CSAT (customer satisfaction score)

up **3** points

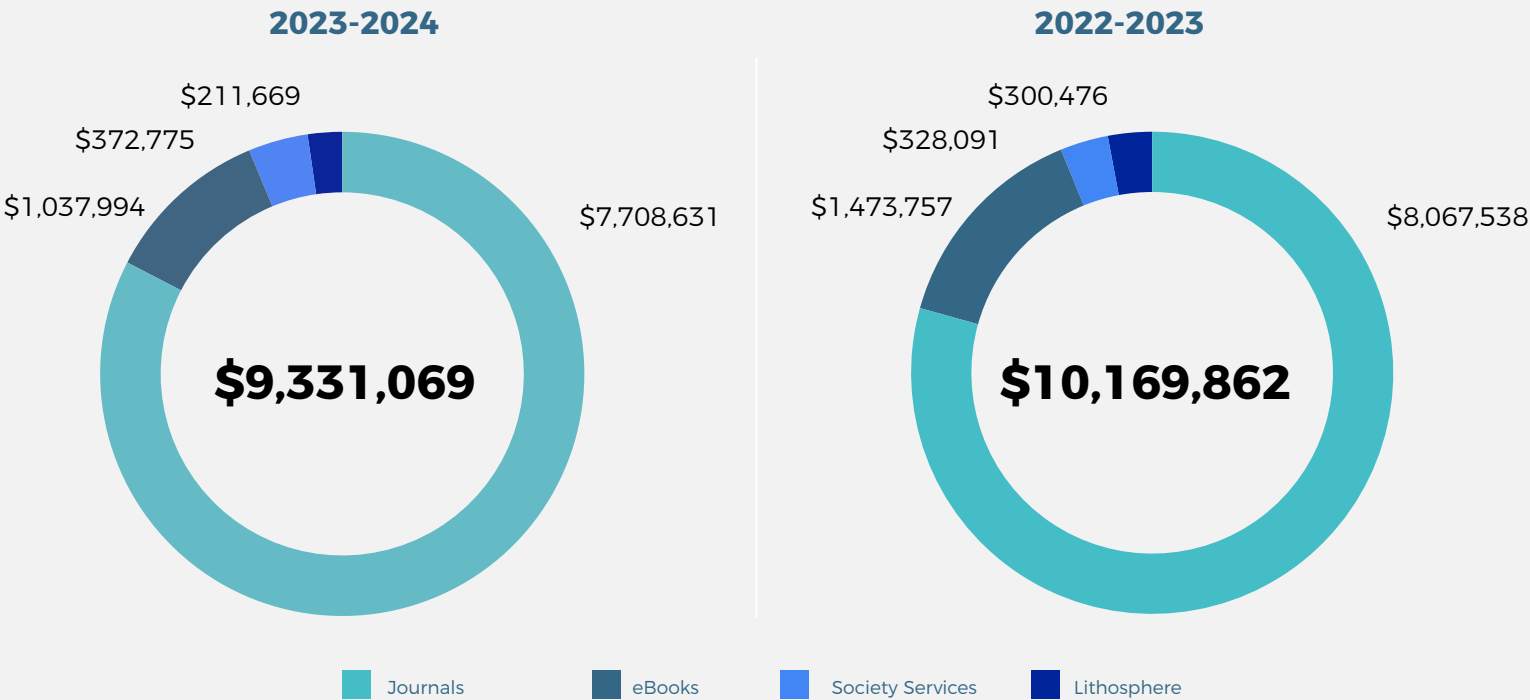


# FINANCIALS

GSW continues to deliver excellent financial results. By returning a high proportion of our income to our content partners, we help protect the viability and independence of society publishing programs while constantly exploring and incorporating valuable

economic, technological, and strategic benefits of collaboration. To date GSW has returned more than \$64.2 million (journal + eBook royalties) to societies to advance their publishing, research, and educational programs.

## REVENUE



### \$9.3M

**Total Revenue**  
(excluding operating reserves and unrealized investment gains or losses) lower than budget by **\$685K** and lower than prior year by **8.3%**

**Journal Revenue**  
**\$7.7M revenue** (including GeoRef) lower than budget by \$294K and lower than prior year by **\$359K**, a decrease of **4.5%**

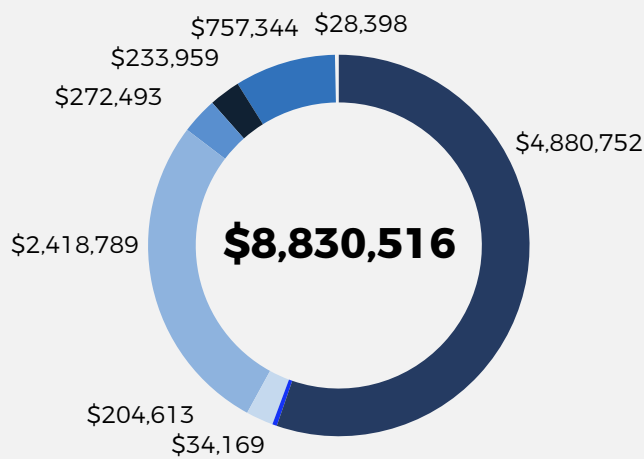
**eBook Revenue**  
**\$1.04M** versus budget of \$1.23M. Program revenue since inception (excluding publisher chargebacks) exceeds **\$8.4M**

**Lithosphere**  
Total annual revenue is **\$214K** and total program revenue to date is **\$1.4M**

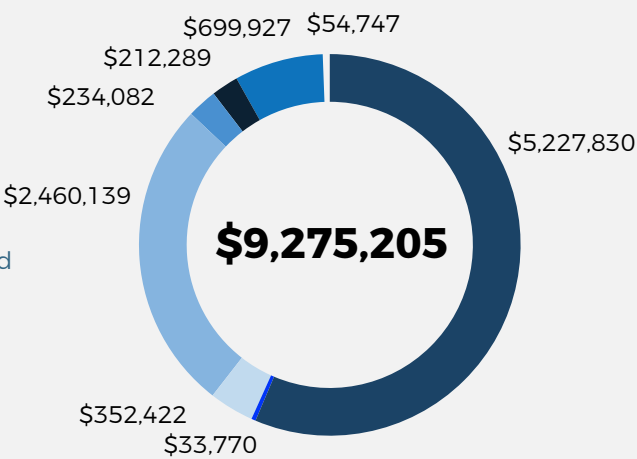


EXPENSE

2023-2024



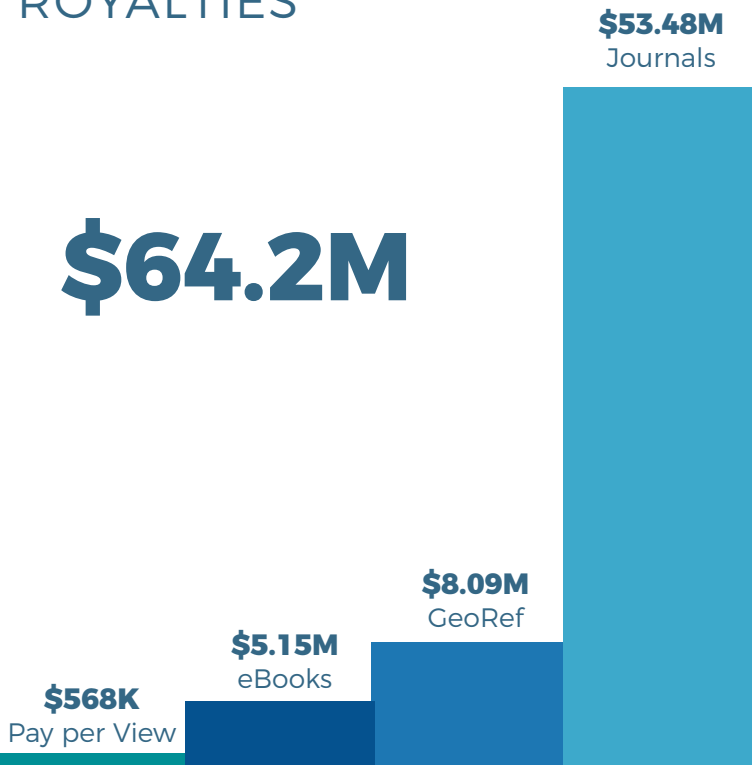
2022-2023



- Royalties & PPV
- Publisher Chargebacks
- Commissions
- People Costs
- Office and Related
- Marketing
- Technology
- Special Projects, R&D

**\$8.83M** Better than budget by \$445K

LIFETIME ROYALTIES



Journals Royalty (CY 2023)

**\$3.9M**  
with GSW retainer a decrease of **5.8%** over last year

eBook Royalty (FY 2023-2024)

**\$619K**  
\$5.15M program to date royalties paid to publishers in ten years since program launch



# THANKS TO OUR COMMUNITY



AASP - The  
Palynological Society



Geological Association  
of Canada (GAC)



Novosibirsk State  
University



American Association  
of Petroleum Geologists  
(AAPG)



Geological Society  
of America



Paleontological Society



Association of Environmental &  
Engineering Geologists



The Geological Society  
of London



Pacific Section  
AAPG



Cambridge University  
Press



Geological Society of  
South Africa



Seismological  
Society of America



Canadian Institute of  
Mining, Metallurgy &  
Petroleum



German Mineralogical  
Society



SEPM Society for Sedimentary  
Geology



Canadian Science  
Publishing



Geological Society of India



Società Italiana di  
Mineralogia e Petrologia



Canadian Society of  
Petroleum Geologists



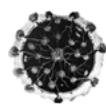
Gulf Petrolink



Société Géologique  
de France



Clay Minerals  
Society



History of the Earth  
Sciences Society



Society of Economic  
Geologists



Cushman Foundation for  
Foraminiferal Research



Italian Mineralogical  
Society



Society of Exploration  
Geophysicists



Earthquake Engineering  
Research Institute



Micropaleontology  
Project



Soil Science Society of  
America



Environmental & Engineering  
Geophysical Society



Mineralogical Association  
of Canada



Spanish Mineralogical  
Society



European Association for  
Geochemistry



Mineralogical  
Society of America



University of Chicago Press



French Mineralogical  
Society



Mineralogical Society of Great  
Britain and Ireland



University of Wyoming

## BOARD OF DIRECTORS



**Colin P. North - Chair**  
Senior Lecturer in Geology,  
University of Aberdeen



**Linda Musser - Vice Chair**  
Distinguished Librarian and Head of  
Earth and Mineral Sciences Library,  
The Pennsylvania State University



**Bridgette Moore - Secretary**  
Editorial Director,  
Geological Society of America



**Anna Salt Troise - Treasurer**  
Chief Education Strategist,  
American Academy of  
Orthopaedic Surgeons



**Ann Benbow**  
Executive Director,  
Mineralogical Society of America



**Howard Harper**  
Executive Director,  
SEPM Society for Sedimentary  
Geology



**Ashley Manning-Berg**  
Assistant Professor of Geology,  
The University of Tennessee at  
Chattanooga



**Nathan Suurmeyer**  
Director,  
XEEK



**Sharon Tahirkeli**  
Emeritus Director,  
Scholarly Information,  
American Geosciences Institute



**Zhiming Yang**  
Research Professor and Chief Geologist,  
Chinese Academy of Geological  
Sciences



**GeoScienceWorld**  
Celebrating 20 Years of Collaboration and Discovery

[geoscienceworld.org](https://www.geoscienceworld.org)

1750 Tysons Boulevard, Suite 1500  
McLean, Virginia 22102 U.S.A.  
[gswinfo@geoscienceworld.org](mailto:gswinfo@geoscienceworld.org)